

# Taurus SDI Double Sided Insert Wood Burning Stove

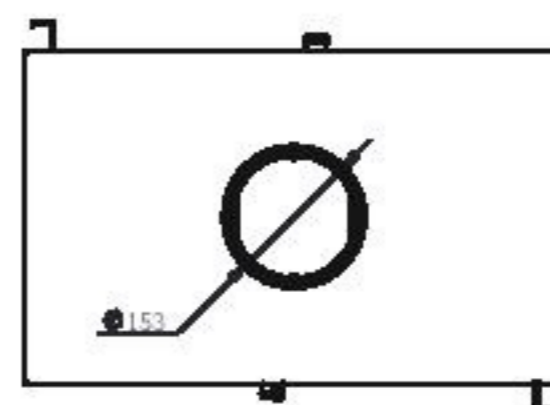
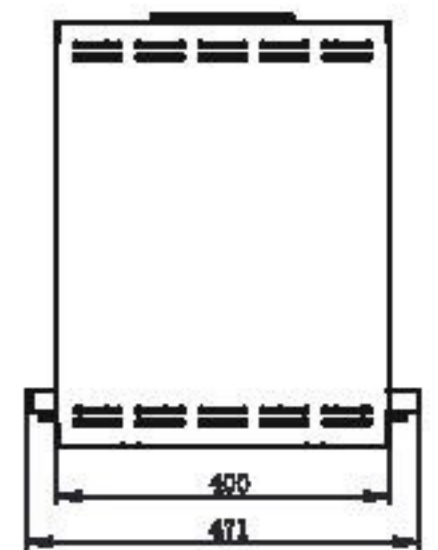
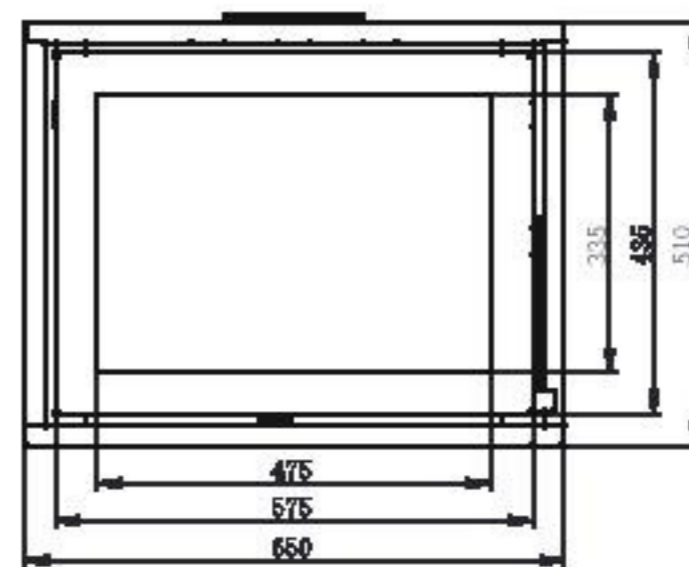
**Canature** FIRE™



Airwash for clean glass, Secondary combustion for greater efficiency and heat output, Convection Unit, Vermiculate Firebricks / Steel top baffle.

## SPECIFICATION

Fuel:	Wood Logs
Heating:	11 KW / 400 Meters Cubed
Flue Size	Dia. 150MM
Metallic Black	
Unit Size:	650 x 510 x 471 (W x H x D)
Gross Weight:	120KG
Net Weight:	105KG



**FIRE PLACE**  
& APPLIANCE

Ph: 021 790 2189

Email: [info@fireplacecapetown.co.za](mailto:info@fireplacecapetown.co.za)